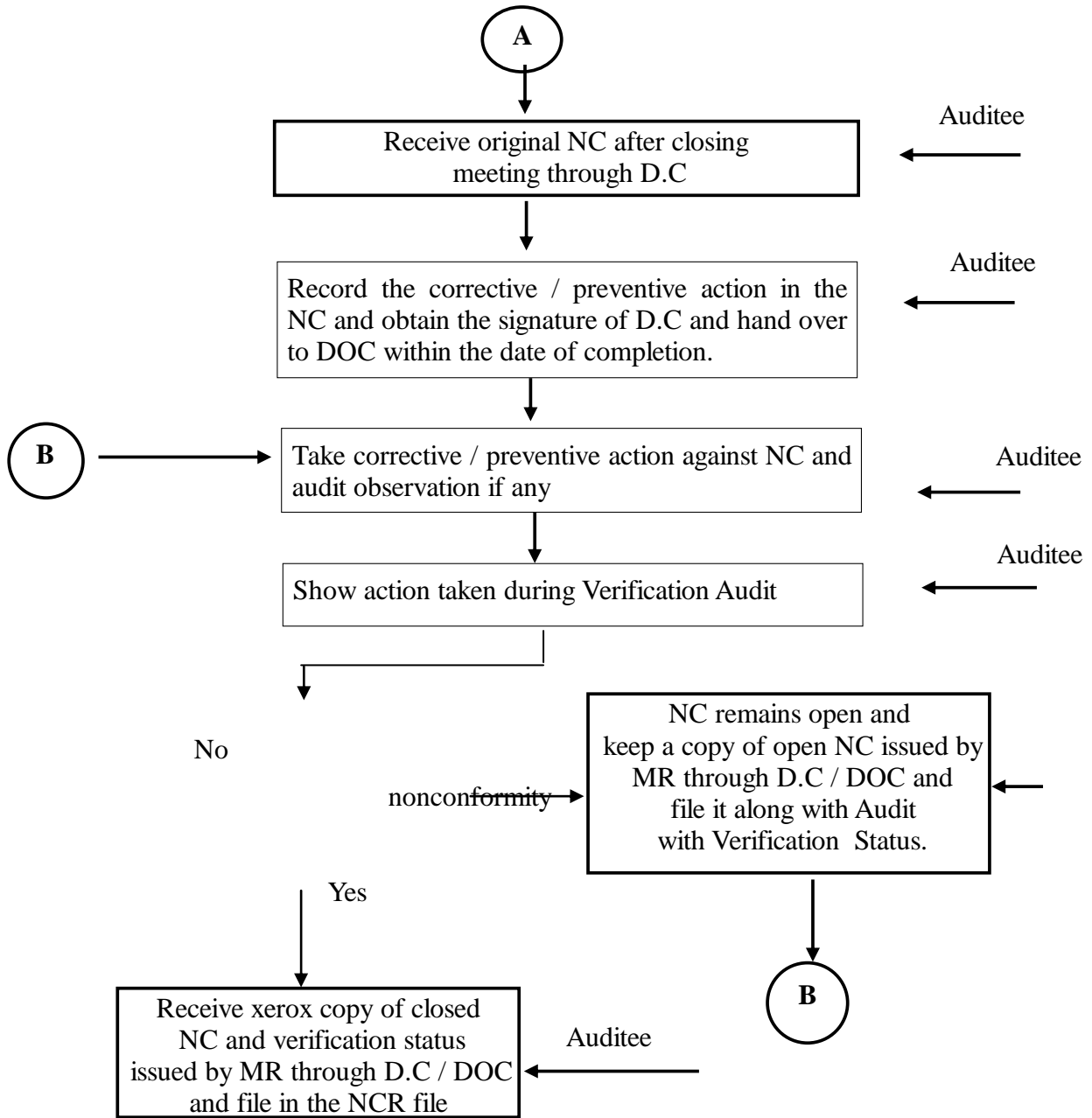


**V.O. Chidambaranar Port Trust
Marine Department
Departmental Manual**

QM/CIE

Common - Follow up action on Internal Audit and NCRs. - Follow up action on External Audit.



Originated by : Department Manual Committee

Issue No. : 11

Date : 17.02.15

Page No. : 2 of 4

Revision No. : 0

Approved by : The Deputy Conservator

Date : 17.02.15

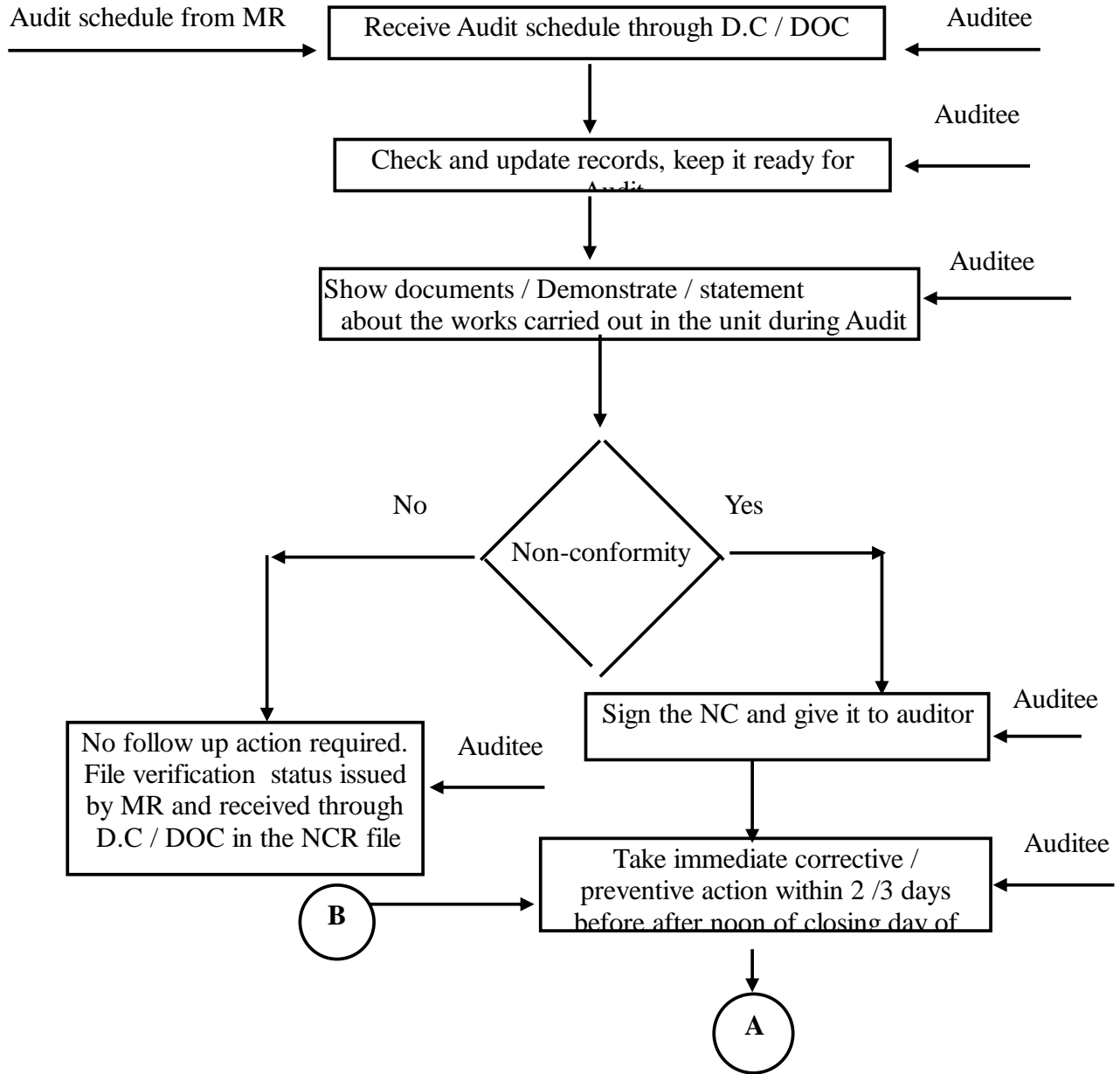
**V.O. Chidambaranar Port Trust
Marine Department
Departmental Manual**

QM/CIE

Common - Follow up action on Internal Audit and NCRs. - Follow up action on External Audit.

2. Follow up action on External Audits

The actions taken in respect of external audit are given in the following flow chart :-



Originated by : Department Manual Committee

Issue No. : 11

Date : 17.02.15

Page No. : 3 of 4

Revision No. : 0

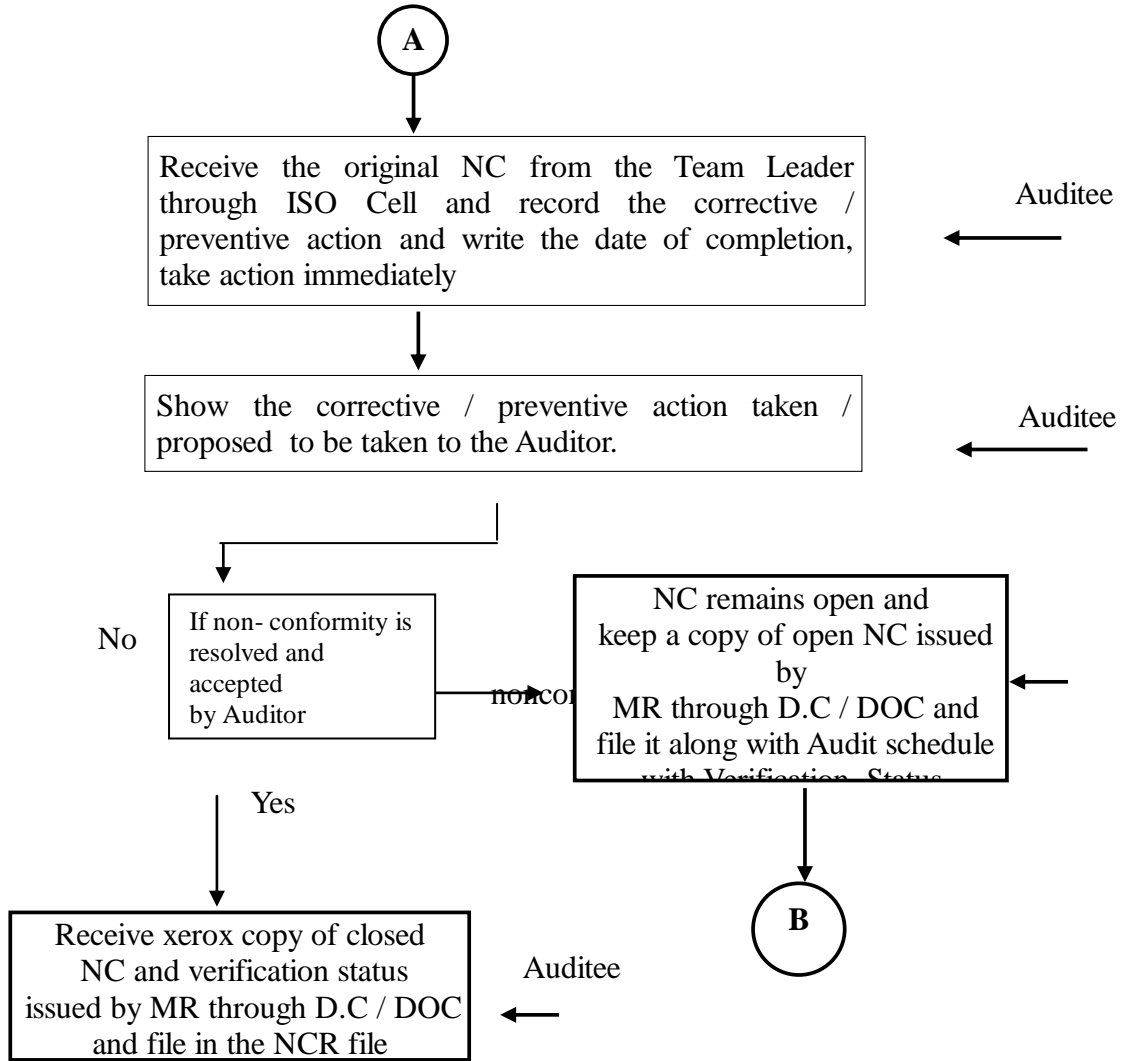
Approved by : The Deputy Conservator

Date : 17.02.15

**V.O. Chidambaranar Port Trust
Marine Department
Departmental Manual**

QM/CIE

Common - Follow up action on Internal Audit and NCRs. - Follow up action on External Audit.



Originated by : Department Manual Committee

Issue No. : 11

Date : 17.02.15

Page No. : 4 of 4

Revision No. : 0

Approved by : The Deputy Conservator

Date : 17.02.15